



## Seattle Erotic Art Festival and Art Framing Guide

The majority of art chosen for inclusion in the Seattle Erotic Art Festival is art that is displayed on a wall. The information below will help you prepare your art for safe and elegant installation on SEAF's walls. The guidelines are good for framed art, stretched canvases, hanging sculptures, mixed-media pieces, and anything else that is meant to hang from picture hooks.

Framing is important and can be affordable. Please take the time to protect and professionally showcase your artwork.

The Festival's partnering frame shop, [Gallery Frames, LLC](#), provides a discount on high quality framing services.

If you plan to frame your own work, please review the following guidelines, and keep in mind that inexpensive, sturdy frames can be found at any art or framing store.

### Properly Preparing Your Work:

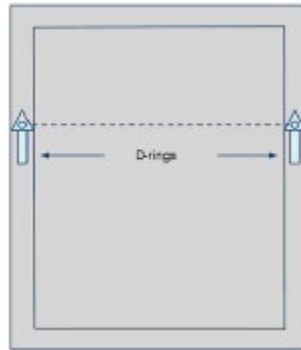
- All work must be presented ready-to-hang, preferably with a wire attached to the frame between one-third and one-quarter of the way down the sides of the piece.
- Coated, stainless steel braided picture wire works best for smooth hanging, and deters rusting.
- D-ring hangers with screws are ideal.
- Hanging hardware or wire must be able to accommodate our art hanging hooks or screws (pictured below)
- Wire should be secured snugly across the back; loose wires allow the frame to hang away from the wall making it more difficult to properly light and less secure.
- All hanging hardware on your frame or canvas should be placed so that the hanging hook or screw will **not** be visible and the piece is able to hang level.
- For unframed canvas paintings, consider painting the sides of the canvas.
- We strongly recommend the use of plexi-glass as it is less likely to break and weighs significantly less. This is ideal for those of you shipping your work.

### Do Not Use the Following:

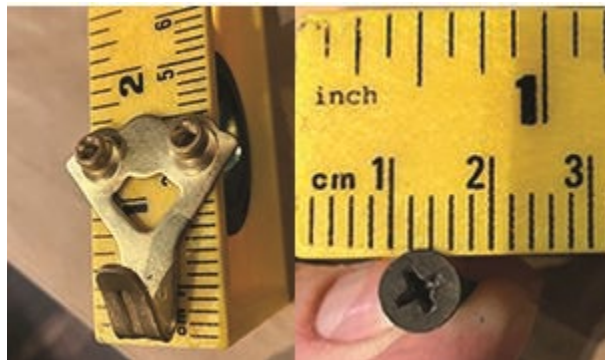
- Do not use two sided plexi frames with clips that sandwich your art/photography between the plexi.
- Do not use "snap on" frames, corner-clips with glass, or "easel" frames designed for tabletop use. These generally do not hang securely.
- Do not use the inexpensive plastic frames from discount stores. These frames tend to have inferior hanging hardware and are more easily damaged in transit.
- Do not use frames that feature sliding clips for the wire. These clips will slip and will cause your art to slide down the wall over time. Make sure the wire attachment screws to the frame.

# SEAF

D-rings are ideal for hanging artwork.



Make sure your wire or hanger can accommodate our art hanging hooks or screws:



# SEAF

Do not use these types of hangers:



Under no circumstances use Duct Tape, Gaffer Tape, Packaging Tape, Hot Glue, or Plastic Hooks:

